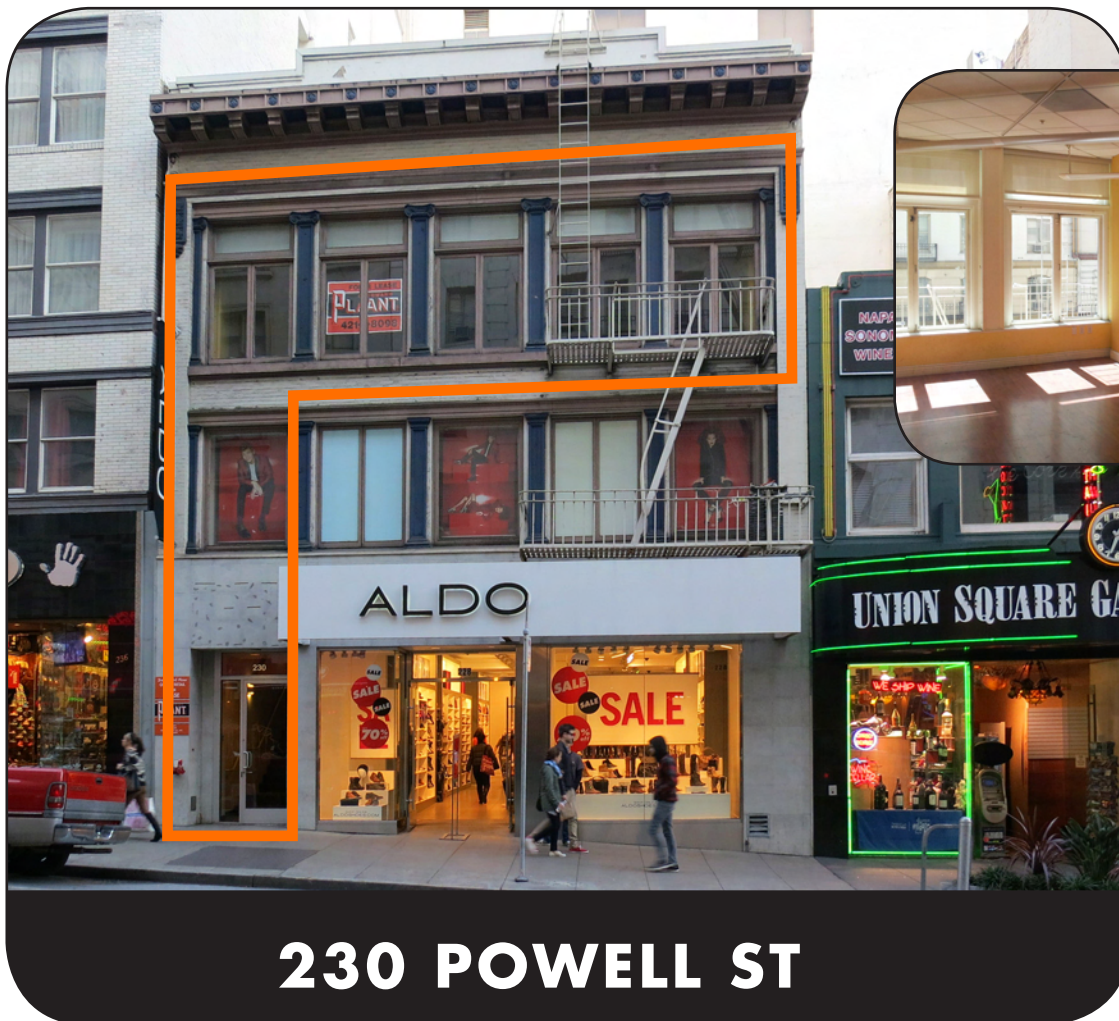


# OFFICE/RETAIL

## SAN FRANCISCO



**230 POWELL ST**

- **Location:** 228 Powell Street between Geary and O'Farrell, right off Union Square
- Excellent parking and transportation options
- Elevator access

- Two spaces available together or separately
- Third Floor 2360 Sq. Ft.
- Second Floor 1330 Sq. Ft.

**For further information and arrangements to inspect, please contact:**

Ted Plant

Phone: 415-421-8098 x 105

Fax: 415-421-0184

[tplant@edwardplant.com](mailto:tplant@edwardplant.com)

License #00685128

Edward Plant Company, Inc.  
601 California Street, #100  
San Francisco, CA 94108  
License # 00459284



601 California St. Suite 100, San Francisco, CA 94108

p. 415.421.8098

f. 415.421.0184

All information was obtained from sources deemed reliable, however, such information has not been verified and no express representation is made nor any implied as to its accuracy.