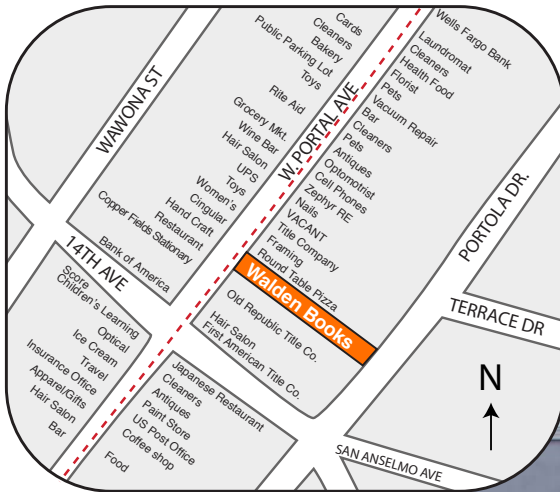


# FOR LEASE: PRIME WEST PORTAL AVE RETAIL



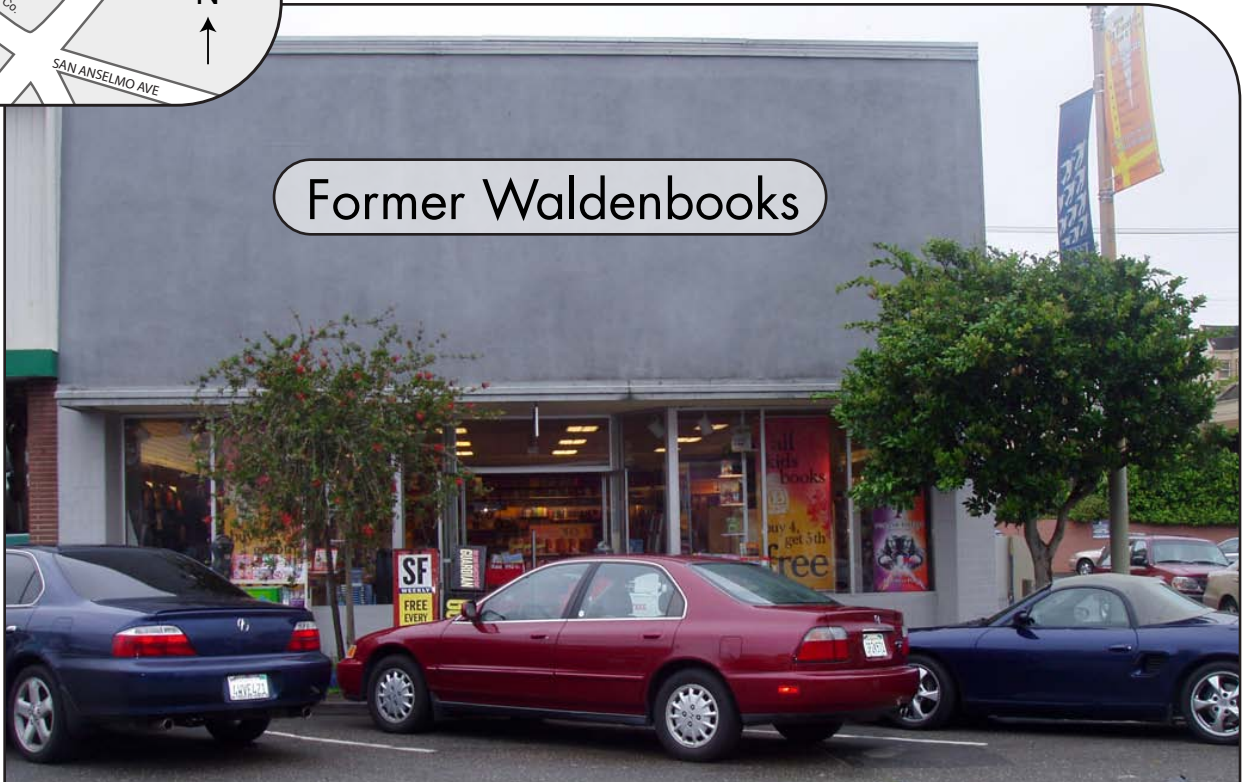
## BETWEEN VICENTE ST. & 14<sup>TH</sup> AVE

- Approx. 33 ft of frontage on West Portal
- Size: Approx. 2,500sf
- Rent: ~~\$8,500/mo NET~~  
**\$7,500/mo NET**
- Term: Negotiable
- Available Now

- Comments: This is one of the prime retail locations in one of San Francisco's most successful retail neighborhoods.
- Affluent residential backup.
- Vacancies here are rare.

SAN FRANCISCO

Former Waldenbooks



255 WEST PORTAL AVENUE

For further information and arrangements to inspect contact:

**EDWARD PLANT COMPANY**



Jerry Moskowitz  
p. 415-421-8098  
f. 415-421-0184  
jmoskowitz@edwardplant.com

Edward Plant Company, Inc.  
601 California Street, #100  
San Francisco, CA 94108

All information was obtained from sources deemed reliable, however, such information has not been verified and no express representation is made nor any implied as to its accuracy.

**SAN FRANCISCO, CA**

