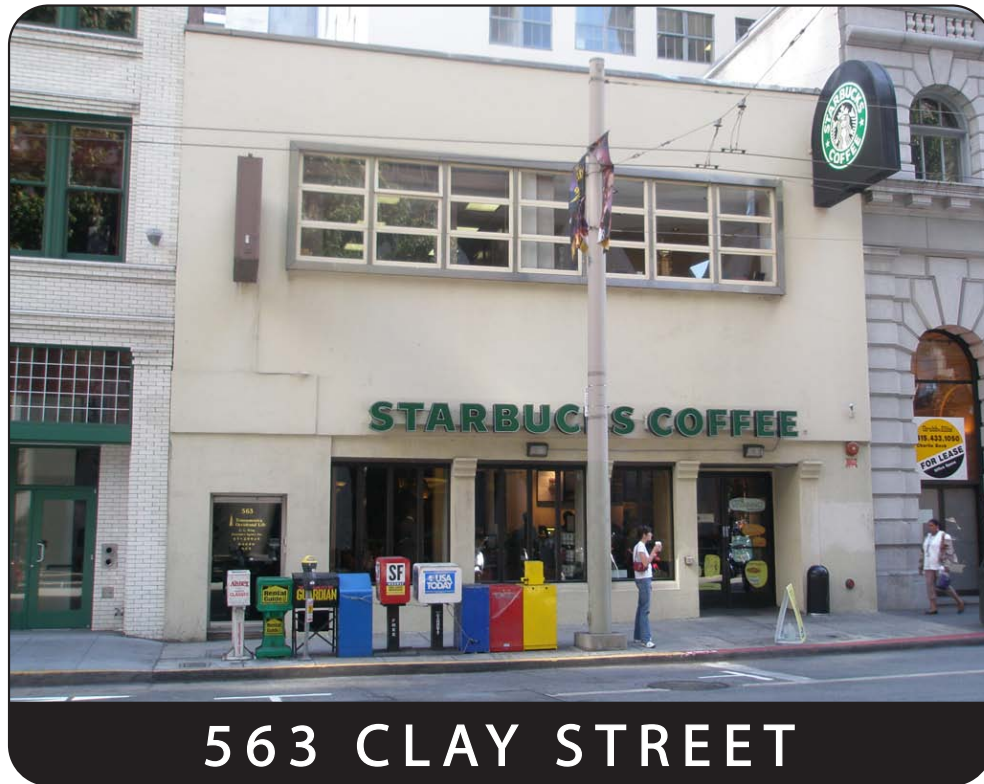


PRIME OFFICE/RETAIL SPACE IN FINANCIAL DISTRICT

SAN FRANCISCO, CA



563 Clay St located directly opposite the Transamerica Building is a second floor retail or office space with its own walk up entrance and signage on Clay Street.

563 Clay is a bright space, with a large (11'x 7') skylight that frames the Transamerica Building. The space is presently configured with a reception area, five private offices, plus an open work area that could be renovated and provide two or three additional private offices.

- 2400 SF 40 x 60
- Sign and walk up entrance on Clay
- Starbucks is the ground fl
- Available Now
- Please Call for Rent

For further information and arrangements to inspect contact:

EDWARD PLANT COMPANY

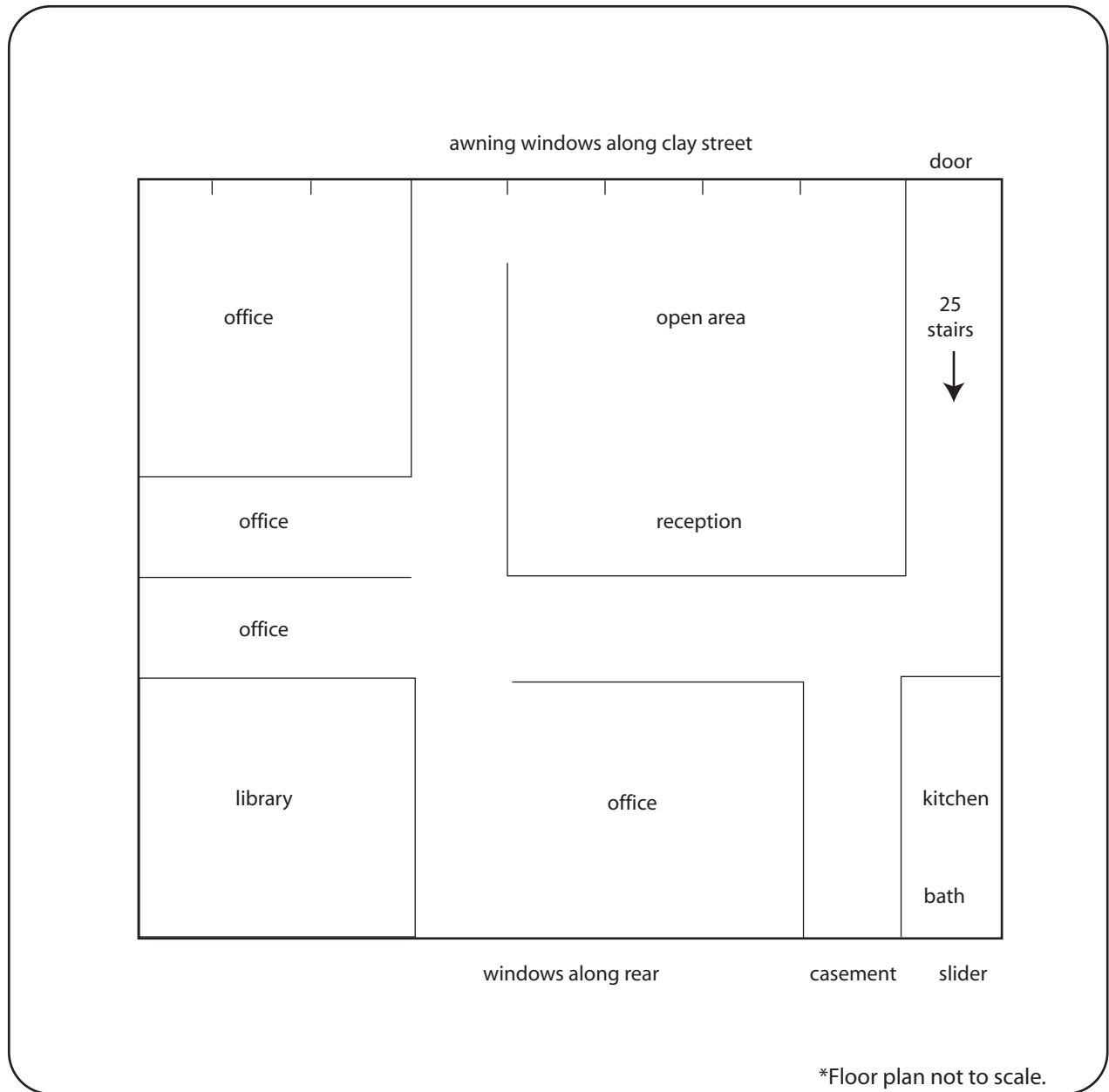


Ted Plant
Phone: 415-421-8098 x105
Fax: 415-421-0184
tplant@edwardplant.com
Broker Licence # 00685128

Edward Plant Company, Inc.
601 California Street, #100
San Francisco, CA 94108

All information was obtained from sources deemed reliable, however, such information has not been verified and no express representation is made nor any implied as to its accuracy.

563 CLAY STREET



For further information and arrangements to inspect contact:

EDWARD PLANT COMPANY



Ted Plant
Phone: 415-421-8098 x 105
Fax: 415-421-0184
tplant@edwardplant.com
Broker Licence # 00685128

Edward Plant Company, Inc.
601 California Street, #100
San Francisco, CA 94108

All information was obtained from sources deemed reliable, however, such information has not been verified and no express representation is made nor any implied as to its accuracy.